

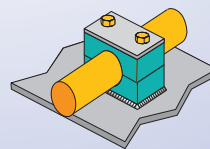
# FASTENAL®



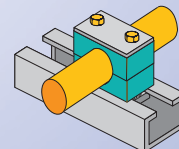
**Beta Clamps** are ideal for clamping pipe, tube, hose, and electric cables. They are an economical and easy way of securing them in all types of terrestrial, marine, O.E.M. and Industrial applications. Thanks to the advanced features and the breadth and depth of our product offering, Beta Clamps are used in all areas of industrial, mobile and marine hydraulics, general industrial pipe construction, the field of press technology, instrumentation and control technology and many more.

- Beta Clamps offer shock-absorption, vibration dampening and noise reducing properties.
- Beta Clamps feature a practical and economical design which make for quick, easy pipe installation and layout.

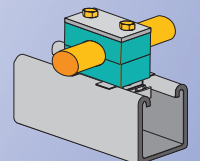
## *Installation Options For All Your Application Needs!*



**Weld Mounted**



**Din Rail  
Mounted**

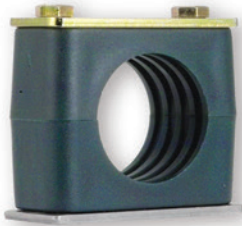


**Channel  
Mounted**

# BETA HYDRAULIC CLAMPS™

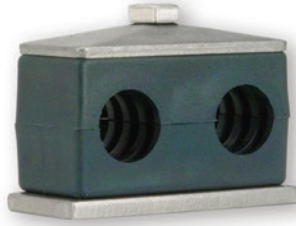
Connected.Simply

[www.zsi-foster.com](http://www.zsi-foster.com)



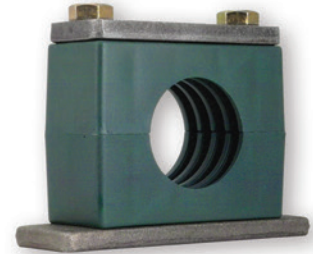
### Beta Standard Series

- For standard hydraulics and systems with less than 1500 PSI without dynamic loads
- Polypropylene cushion and steel components



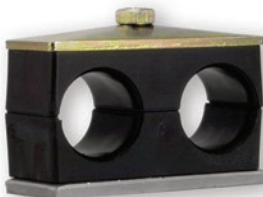
### Beta Twin Series

- For standard hydraulics, general pipe construction and electrical cables
- Polypropylene cushion and steel components



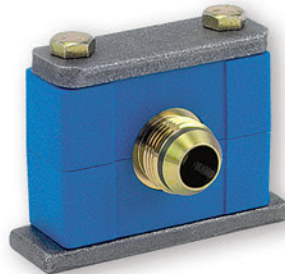
### Beta Heavy Series

- For systems with greater than 1500 PSI operating pressure, operations with pressure surges, and applications with wide temperature fluctuations.
- Absorbs high levels of shock, noise, and vibration
- Polypropylene cushion & steel components



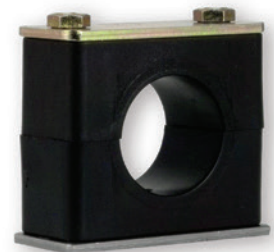
### Beta Twin "Smoothie" Series

- Reduces wear on hose connection caused by vibration and surge.
- Chamfered and smooth core protects hose cover and extends hose life.
- Uses Beta Twin hardware
- Polypropylene cushion and steel components



### Beta Adapter Series

- Allows a clamping junction to be inserted into hydraulic lines
- The adapter body is offered in two sizes for use with the Z-Clamp adapter inserts



### Beta Standard "Smoothie" Series

- Reduces wear on hose connection caused by vibration and surge.
- Chamfered and smooth core protects hose cover and extends hose life.
- Uses Beta Standard hardware
- Polypropylene cushion & steel components



### Beta Special Metals Series

- Aluminum cushions with steel components are used in high heat applications up to 500°
- Stainless steel clamp hardware with polypropylene cushion are used in applications where external corrosion is a concern.



### Beta Rubber Inserts Series

- Available in standard and heavy
- One cushion block provides flexible size range of cushioning.
- Smooth bore core can be used on hose, or for vibration reduction



### ZSI, INC.

45065 Michigan Ave.  
 Canton, MI 48188  
 Tel: (734) 844-0055  
 Tel: (800) 323-7053  
 Fax: (734) 844-0066